

[Back to index](#)

SENATOR

FREEFLOW

—
Senator Price List 2025

senator.online

FREEFLOW



AUTO-ADAPTIVE COMFORT.

Freeflow is meticulously crafted to adjust to a users body using 'auto-adaptive' technology and provide a comfortable seating experience within the surrounding environment.

As workplaces become more collaborative, we developed a chair that seamlessly integrates with you, requiring minimal adjustments for optimal comfort. Freeflow is designed to fit you and sit calmly in the environment.



DESIGN
Volker Eysing

Volker Eysing, born in Westphalian Muensterland, is an industrial designer from Kiel, Germany. After finishing his studies at the college for further education of Art and Design in Muenster he completed his apprenticeship as a carpenter, followed by his studies of

industrial / constructive design under the guidance of Prof. Dieter Zimmer at the Muthesius Kunsthochschule, Kiel. Opening his office in 2004, he has since won numerous awards for his clear design aesthetic that is intelligent, and above all, simple to understand.

FREEFLOW

STANDARD FEATURES (*Selected models only)

- Technical knit fabric back
- Over molded PU foam back
- Complementary seat fabric
- Molded PU foam seat
- Synchronized mechanism with auto-adaptive adjustment
- Integrated flexible back
- 2.4" seat depth adjustment
- Fixed arms with PU inlay pad*

- Height adjustable arms with multi-functional arm pads*
- Gas lift
- 5 Star Plastic base
- 2.5" hard wheel casters

OPTIONAL FEATURES (*Selected models only)

- Casters for hard and soft floor coverings
- Choice of finish options available

DIMENSIONS

OH-Overall Height OD-Overall Depth OW-Overall Width AH-Arm Height BH-Back Height SH-Seat Height SW-Seat Width SD-Seat Depth BD - Base Depth



FREEFLOW

Self mechanised and adaptive back support

- The synchro mechanism ensures the seat and backrest move in harmony with a ratio of 3.5 and a maximum back recline of 15 degrees.
- The mechanism incorporates a single lever that can be used to adjust the seat height, select a locked upright sitting position or to engage the free-floating action.



AT A GLANCE

1. Auto-adaptive flexing back structure, automatically adjusts the chair to the user.

2. The structural elements of the chair are available in light gray and black plastics.

3. Upholstered elements are available in seven color configurations.

4. The technical knit back cover has been specifically developed to cope with the three dimensional

movement of the back without stretching or puckering over time.

5. The seat and back are effectively a unified structure, designed around the ability to adapt to the user and flex, move and support.

6. Active Body balance.

7. The tilt action for the chair is a new generation of active body balance mechanism, simply by sitting in the chair you activate the mechanism

providing resistance to the tilting action.

8. 4D Multi-functional arms adjust for; height, width, arm pad depth and arm pad orientation.

9. An elegant fixed arm is available as an option.

10. The seat depth adjustment control is integrated into the seat.

11. The single adjustment lever adjusts the seat height and when moved forward will lock the chairs tilting action.

FREEFLOW

Finish Options

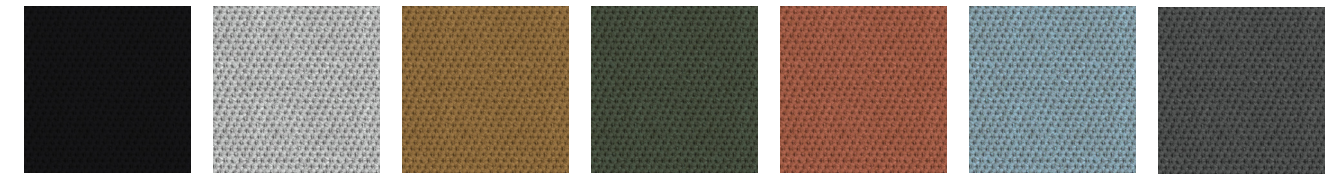
- Plastic components available in Black or Light Gray (mechanism, back, arms, gas lift, 5 star base and wheel housing).
- Upholstered technical knit back available in Onyx, Pearl, Ochre, Pine, Umber, Cliffside and Charcoal.
- Upholstered seat available in complementary woven fabric.

COMPONENT COLOR



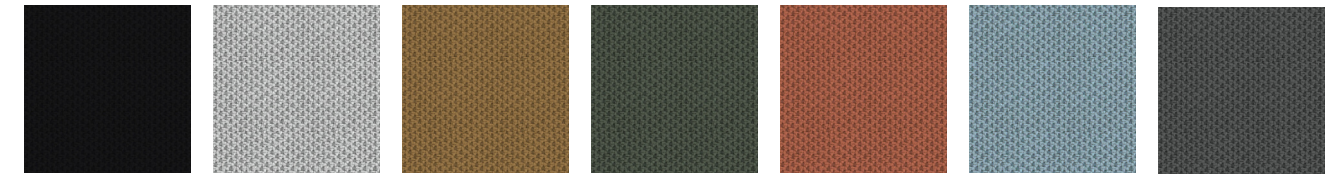
Black Light Gray

TECHNICAL KNIT FABRIC BACK



Onyx Pearl Ochre Pine Umber Cliffside Charcoal

WOVEN FABRIC SEAT (COMPLEMENTARY)



Onyx Pearl Ochre Pine Umber Cliffside Charcoal

Technical knit back fabric and complementary woven seat fabric:

- Knit fabric Onyx (back) with woven Onyx (seat)
- Knit fabric Pearl (back) with woven Pearl (seat)
- Knit fabric Ochre (back) with woven Ochre (seat)
- Knit fabric Pine (back) with woven Pine (seat)
- Knit fabric Umber (back) with woven Umber (seat)
- Knit fabric Cliffside (back) with woven Cliffside (seat)
- Knit fabric Charcoal (back) with woven Charcoal (seat)

FREEFLOW

- Standard feature
- Not available

Optional feature

	FRF740-US Task chair with no arms	FRF740A-US Task chair with fixed arms	FRF740MF-US Task chair with multi-function arms
Weight	31lbs	34lbs	35lbs
3D technical knit fabric back in Onyx	●	●	●
Over molded PU foam back	●	●	●
Seat fabric finish in complementary woven fabric	●	●	●
Molded PU foam seat	●	●	●
Components available in Black	●	●	●
Integrated flexible back	●	●	●
2.4" seat depth adjustment	●	●	●
Synchronized mechanism with back locking function in upright position	●	●	●
Fixed arms with PU inlay pad	□	●	□
Height adjustable arms with multi-functional arm pads	□	□	●
Gas lift	●	●	●
2.5" hard wheel casters	●	●	●
Technical knit fabric available in Pearl, Ochre, Pine, Umber, Cliffside or Charcoal with complementary woven seat fabric	+ \$0	+ \$0	+ \$0
Components available in Light Gray	+ \$45	+ \$45	+ \$45
2.5" soft wheel casters	+ \$45	+ \$45	+ \$45

Technical knit back fabric and complementary woven seat fabric:

- Knit fabric Onyx (back) with woven Onyx (seat)
- Knit fabric Pearl (back) with woven Pearl (seat)
- Knit fabric Ochre (back) with woven Ochre (seat)
- Knit fabric Pine (back) with woven Pine (seat)
- Knit fabric Umber (back) with woven Umber (seat)
- Knit fabric Cliffside (back) with woven Cliffside (seat)
- Knit fabric Charcoal (back) with woven Charcoal (seat)

Freeflow Caster Options

Caster options are an upcharge of \$45 per chair

- 2.5" Twin wheel soft casters for hard floors



Hard wheel (standard)



Soft wheel

FREEFLOW

Knit Fabric

<p>FRF740-US</p> <ul style="list-style-type: none"> • Task chair • No arms • Knit fabric back • Complementary fabric seat • Black 	1140
<p>FRF740A-US</p> <ul style="list-style-type: none"> • Task chair • Fixed arms • Knit fabric back • Complementary fabric seat • Black 	1265
<p>FRF740MF-US</p> <ul style="list-style-type: none"> • Task chair • Multi-function arms • Knit fabric back • Complementary fabric seat • Black 	1315

All prices listed in US \$



To specify your chair

1. Check the Standard Features & Finishes and select the model you require
2. Select any Optional Extras or Alternative Finishes you require and add on any extra costs as shown per chair
3. You now have the total cost and specification for your Item

When ordering, please ensure that you send us all this information, so we can correctly fulfill your requirements