

### OUSBY

Ousby is a task seating range that boasts exceptional comfort and affordability.

Designed using flexible, durable and sustainable materials that respond to your movements, Ousby is an organically shaped seating range that provides comfort and support throughout the day, whatever the task.

Offering a contoured mesh back, Ousby features an adjustable integrated lumbar as standard. Its multi-functional arms accommodate varied tasks and user preferences. Ousby also features a dynamic synchronized mechanism with quick tension adjustment and back locking in 5 positions.



### DIMENSIONS



### DESIGN

#### Senator

Our team of talented in house designers are responsible for creating elegant, innovative furniture designs which not only look beautiful, but minimise the impact on the world around us.

They come from all over the world, but are based in our Design Center located in a quiet Lancashire village just outside the Ribble Valley. Our dedicated facility is over three floors which include studios, a materials test center and prototyping lab.

### STANDARD FEATURES (\*Selected models only)

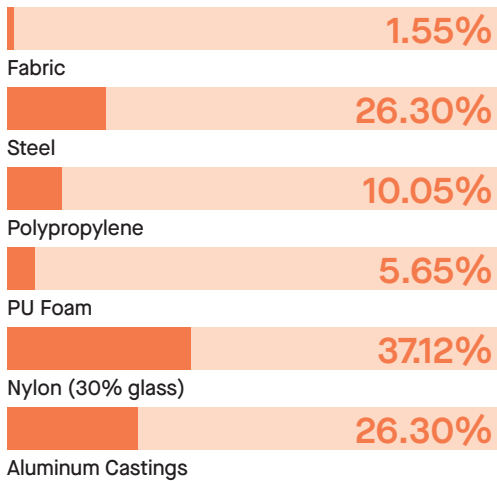
- 5 Star base
- 2.5" Hard wheel casters
- Dynamic synchronized mechanism with quick tension adjustment, back locking in five positions, including locking upright\*
- Molded seat foam cushion
- 2.4" seat depth adjustment\*
- Self-supporting mesh back
- 2" Adjustable lumbar support
- Height and width adjustable arms\*
- Height and width adjustable arms with multi-functional arm pad\*

### OPTIONAL FEATURES

- Casters for hard and soft floor coverings
- Gas lift options
- Choice of finish options available (See finish page)

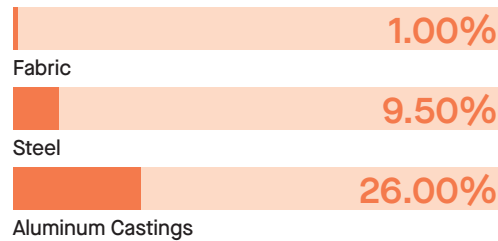
### MATERIAL CONTENT

Components are constructed of the following



### RECYCLED CONTENT

Contains up to 36.50% of Recycled Material



### RECYCLABILITY

The range is 99% recyclable

# 99%

### SENATOR 3 R'S

Senator is committed to continually improving the sustainability of all environmental aspects within our business.

To meet both international standards and our own environmental targets we apply the three R's principle

#### -Reduce, Reuse and Recycle

While recycling is the element which receives the most exposure it is actually the last option available and should never be the prime target in anyone's battle to reduce waste.

It is our duty as individuals and as a company to initially attempt to **Reduce** usage. Then we should look to **Reuse** wherever possible and finally, only after these two processes have been exhausted, should we consider **Recycling**.

# REDUCE REUSE RECYCLE

## FINISH OPTIONS

5 Star base available in Black, Light Grey or Graphite Plastic and Polished Aluminum

Plastic components available in Black, Graphite or Light Grey

Self-supporting mesh back available in Black, Grey, Snow, Storm, Aqua, Avocado, Sunset, Sand and Black Mono Stripe

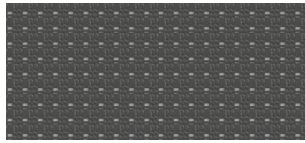
Ousby can be upholstered in a broad range of contract upholstery fabrics, vinyl and leathers from The Senator Group standard upholstery collection.

Please refer to individual price list pages for full specification options.

## MESH COLORS



Black



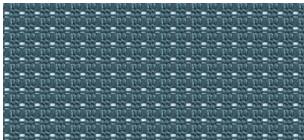
Grey



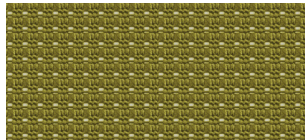
Snow



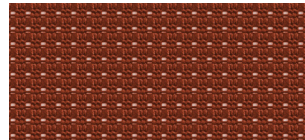
Storm



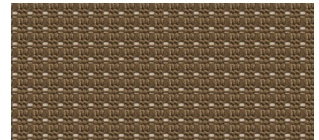
Aqua



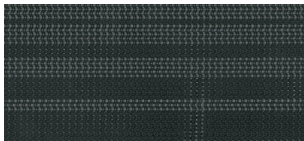
Avocado



Sunset

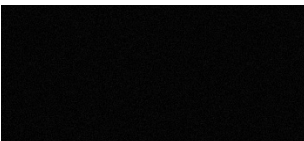


Sand

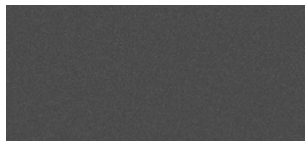


Black Mono Stripe

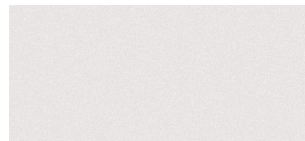
## COMPONENT FINISHES



Black (Plastic)

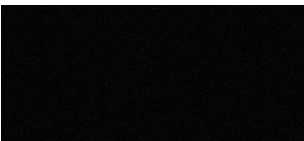


Graphite (Plastic)

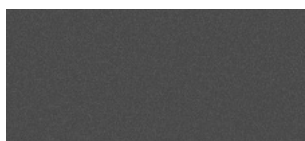


Light Grey (Plastic)

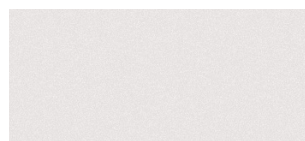
## BASE FINISHES



Black (Plastic)



Graphite (Plastic)



Light Grey (Plastic)



Polished Aluminum