

CONTOUR

SENATOR

Contour is a lightweight, flexible work and meeting chair designed in accordance with circular design principles.

The backrest is made using 100% recycled Polypropylene and both backrest and seat come with removable covers that can be chosen to be upholstered using 100% recyclable material, further ensuring reparability and longevity.

OVERVIEW



CTR101



CTR101A



CTR102



CTR102A



CTR103



CTR104A



CTR105



CTR105A



PearsonLloyd

PearsonLloyd is a product, furniture and innovation design studio led by founders Luke Pearson and Tom Lloyd, and run from a studio in Shoreditch, East London. For the last twenty years, the agency has designed products, systems and environments for the home, workplace, transport and healthcare sectors. In 2008, Luke and Tom were awarded the distinction of Royal Designers for Industry by The Royal Society of Arts in 2012 were named in the top 50 designers 'Shaping the Future' by Fast-Co Magazine in New York.

CERTIFICATION

Standard Features

(*Selected Models Only)

- Plastic Shell*
- Upholstered seat pad
- Plastic arm pads*
- Plastic loop arms*
- Tubular Steel frame*
- Tubular Steel frame with swivel writing table and wire basket*
- Plastic under seat shroud in Black*
- Height adjustment tilt mechanism with gas cylinder*
- 5 Star Plastic base*
- Hard wheel castors*

Optional Features

(*Selected Models Only)

- Plastic glides with felt*
- Counter height stool*

FINISHES

Options

- Plastic shell available in Black, Pistachio, Navy, Orange Crush or Crayon Grey
- Tubular steel frame available in complementary Black, Pistachio, Navy, Orange Crush or Crayon Grey powder coat
- Plastic five star base and mechanism available in Black

Plastic Shell Colour



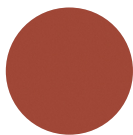
Black



Pistachio



Navy

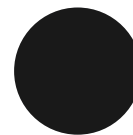


Orange
Crush



Crayon
Grey

Arm Finishes



Black

Frame Finish



Black



Pistachio



Navy



Orange Crush



Crayon Grey

(powder coat) (powder coat) (powder coat) (powder coat) (powder coat)

DIMENSIONS

CTR101

Overall Height: 865mm
Overall Width: 530mm
Overall Depth: 560mm
Seat Height: 465mm
Seat Width: 490mm
Seat Depth: 480mm



CTR101A

Overall Height: 865mm
Overall Width: 630mm
Overall Depth: 560mm
Seat Height: 465mm
Seat Width: 490mm
Seat Depth: 480mm
Arm Height: 665mm



CTR102

Overall Height: 865mm
Overall Width: 530mm
Overall Depth: 560mm
Seat Height: 465mm
Seat Width: 490mm
Seat Depth: 480mm



CTR102A

Overall Height: 865mm
Overall Width: 630mm
Overall Depth: 560mm
Seat Height: 465mm
Seat Width: 490mm
Seat Depth: 480mm
Arm Height: 665mm



CTR103

Overall Height: 1180mm
Overall Width: 565mm
Overall Depth: 590mm
Seat Height: 785mm
Seat Width: 490mm
Seat Depth: 480mm



CTR104A

Overall Height: 865mm
Overall Width: 675mm
Overall Depth: 690mm
Seat Height: 465mm
Seat Width: 490mm
Seat Depth: 480mm
Arm Height: 665mm



CTR105

Overall Height: 965mm
Overall Width: 750mm
Overall Depth: 750mm
Seat Height: 465mm
Seat Width: 490mm
Seat Depth: 480mm



CTR105A

Overall Height: 965mm
Overall Width: 750mm
Overall Depth: 750mm
Seat Height: 465mm
Seat Width: 490mm
Seat Depth: 480mm
Arm Height: 665mm



CONTOUR

SENATOR

Contour is a lightweight, flexible work and meeting chair designed in accordance with circular design principles.

The backrest is made using 100% recycled Polypropylene and both backrest and seat come with removable covers that can be chosen to be upholstered using 100% recyclable material, further ensuring reparability and longevity.

OVERVIEW



CTR201



CTR201A



CTR202



CTR202A



CTR203



CTR204A



CTR205



CTR205A



PearsonLloyd

PearsonLloyd is a product, furniture and innovation design studio led by founders Luke Pearson and Tom Lloyd, and run from a studio in Shoreditch, East London. For the last twenty years, the agency has designed products, systems and environments for the home, workplace, transport and healthcare sectors. In 2008, Luke and Tom were awarded the distinction of Royal Designers for Industry by The Royal Society of Arts in 2012 were named in the top 50 designers 'Shaping the Future' by Fast-Co Magazine in New York.

CERTIFICATION

Standard Features

(*Selected Models Only)

- Upholstered seat pad
- Upholstered shell
- Plastic arm pads*
- Plastic loop arms*
- Tubular Steel frame*
- Tubular Steel frame with swivel writing table and wire basket*
- Plastic under seat shroud in Black*
- Height adjustment tilt mechanism with gas cylinder*
- 5 Star Plastic base*
- Hard wheel castors*

Optional Features

(*Selected Models Only)

- Plastic glides with felt*
- Counter height stool*
- Multiple Fabrics*

FINISHES

Options

- Plastic shell available in Black, Pistachio, Navy, Orange Crush or Crayon Grey
- Tubular steel frame available in Black powder coat with fully upholstered version
- Plastic five star base and mechanism available in Black
- Upholstered seat and back can be upholstered in a select range of fabrics.

Plastic Shell Colour



Black



Pistachio



Navy

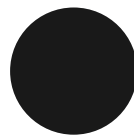


Orange
Crush



Crayon
Grey

Arm Finishes



Black

Frame Finish



Black
(powder coat)

DIMENSIONS

CTR201

Overall Height: 865mm
Overall Width: 530mm
Overall Depth: 560mm
Seat Height: 465mm
Seat Width: 490mm
Seat Depth: 480mm



CTR201A

Overall Height: 865mm
Overall Width: 630mm
Overall Depth: 560mm
Seat Height: 465mm
Seat Width: 490mm
Seat Depth: 480mm
Arm Height: 665mm



CTR202

Overall Height: 865mm
Overall Width: 530mm
Overall Depth: 560mm
Seat Height: 465mm
Seat Width: 490mm
Seat Depth: 480mm



CTR202A

Overall Height: 865mm
Overall Width: 630mm
Overall Depth: 560mm
Seat Height: 465mm
Seat Width: 490mm
Seat Depth: 480mm
Arm Height: 665mm



CTR203

Overall Height: 1180mm
Overall Width: 565mm
Overall Depth: 590mm
Seat Height: 785mm
Seat Width: 490mm
Seat Depth: 480mm



CTR204A

Overall Height: 865mm
Overall Width: 675mm
Overall Depth: 690mm
Seat Height: 465mm
Seat Width: 490mm
Seat Depth: 480mm
Arm Height: 665mm



CTR205

Overall Height: 965mm
Overall Width: 750mm
Overall Depth: 750mm
Seat Height: 465mm
Seat Width: 490mm
Seat Depth: 480mm



CTR205A

Overall Height: 965mm
Overall Width: 750mm
Overall Depth: 750mm
Seat Height: 465mm
Seat Width: 490mm
Seat Depth: 480mm
Arm Height: 665mm



CONTOUR

SENATOR

Contour is a lightweight, flexible work and meeting chair designed in accordance with circular design principles.

The backrest is made using 100% recycled Polypropylene and both backrest and seat come with removable covers that can be chosen to be upholstered using 100% recyclable material, further ensuring reparability and longevity.

OVERVIEW



CTR251



CTR251A



CTR252



CTR252A



CTR253



CTR254A



CTR105



CTR255A



PearsonLloyd

PearsonLloyd is a product, furniture and innovation design studio led by founders Luke Pearson and Tom Lloyd, and run from a studio in Shoreditch, East London. For the last twenty years, the agency has designed products, systems and environments for the home, workplace, transport and healthcare sectors. In 2008, Luke and Tom were awarded the distinction of Royal Designers for Industry by The Royal Society of Arts in 2012 were named in the top 50 designers 'Shaping the Future' by Fast-Co Magazine in New York.

CERTIFICATION

Standard Features

(*Selected Models Only)

- Plastic Shell
- Upholstered seat pad
- Upholstered shell
- Removeable upholstery covers*
- Plastic arm pads*
- Plastic loop arms*
- Tubular Steel frame*
- Tubular Steel frame with swivel writing table and wire basket*
- Plastic under seat shroud in Black*
- Height adjustment tilt mechanism with gas cylinder*

- 5 Star Plastic base*
- Hard wheel castors*

Optional Features

(*Selected Models Only)

- Plastic glides with felt*
- Counter height stool*
- Multiple Fabrics*

FINISHES

Options

- Plastic shell available in Black, Pistachio, Navy, Orange Crush or Crayon Grey
- Tubular steel frame available in complementary Black, Pistachio, Navy, Orange Crush or Crayon Grey powder coat
- Plastic five star base and mechanism available in Black
- Upholstered seat and back can be upholstered in a select range of fabrics.

Plastic Shell Colour



Black



Pistachio



Navy



Orange
Crush



Crayon
Grey

Arm Finishes



Black

Frame Finish



Black



Pistachio



Navy



Orange Crush



Crayon Grey

(powder coat) (powder coat) (powder coat) (powder coat) (powder coat)

DIMENSIONS

CTR251

Overall Height: 865mm
Overall Width: 530mm
Overall Depth: 560mm
Seat Height: 465mm
Seat Width: 490mm
Seat Depth: 480mm



CTR251A

Overall Height: 865mm
Overall Width: 630mm
Overall Depth: 560mm
Seat Height: 465mm
Seat Width: 490mm
Seat Depth: 480mm
Arm Height: 665mm



CTR252

Overall Height: 865mm
Overall Width: 530mm
Overall Depth: 560mm
Seat Height: 465mm
Seat Width: 490mm
Seat Depth: 480mm



CTR252A

Overall Height: 865mm
Overall Width: 630mm
Overall Depth: 560mm
Seat Height: 465mm
Seat Width: 490mm
Seat Depth: 480mm
Arm Height: 665mm



CTR253

Overall Height: 1180mm
Overall Width: 565mm
Overall Depth: 590mm
Seat Height: 785mm
Seat Width: 490mm
Seat Depth: 480mm



CTR254A

Overall Height: 865mm
Overall Width: 675mm
Overall Depth: 690mm
Seat Height: 465mm
Seat Width: 490mm
Seat Depth: 480mm
Arm Height: 665mm



CTR255

Overall Height: 965mm
Overall Width: 750mm
Overall Depth: 750mm
Seat Height: 465mm
Seat Width: 490mm
Seat Depth: 480mm



CTR255A

Overall Height: 965mm
Overall Width: 750mm
Overall Depth: 750mm
Seat Height: 465mm
Seat Width: 490mm
Seat Depth: 480mm
Arm Height: 665mm

